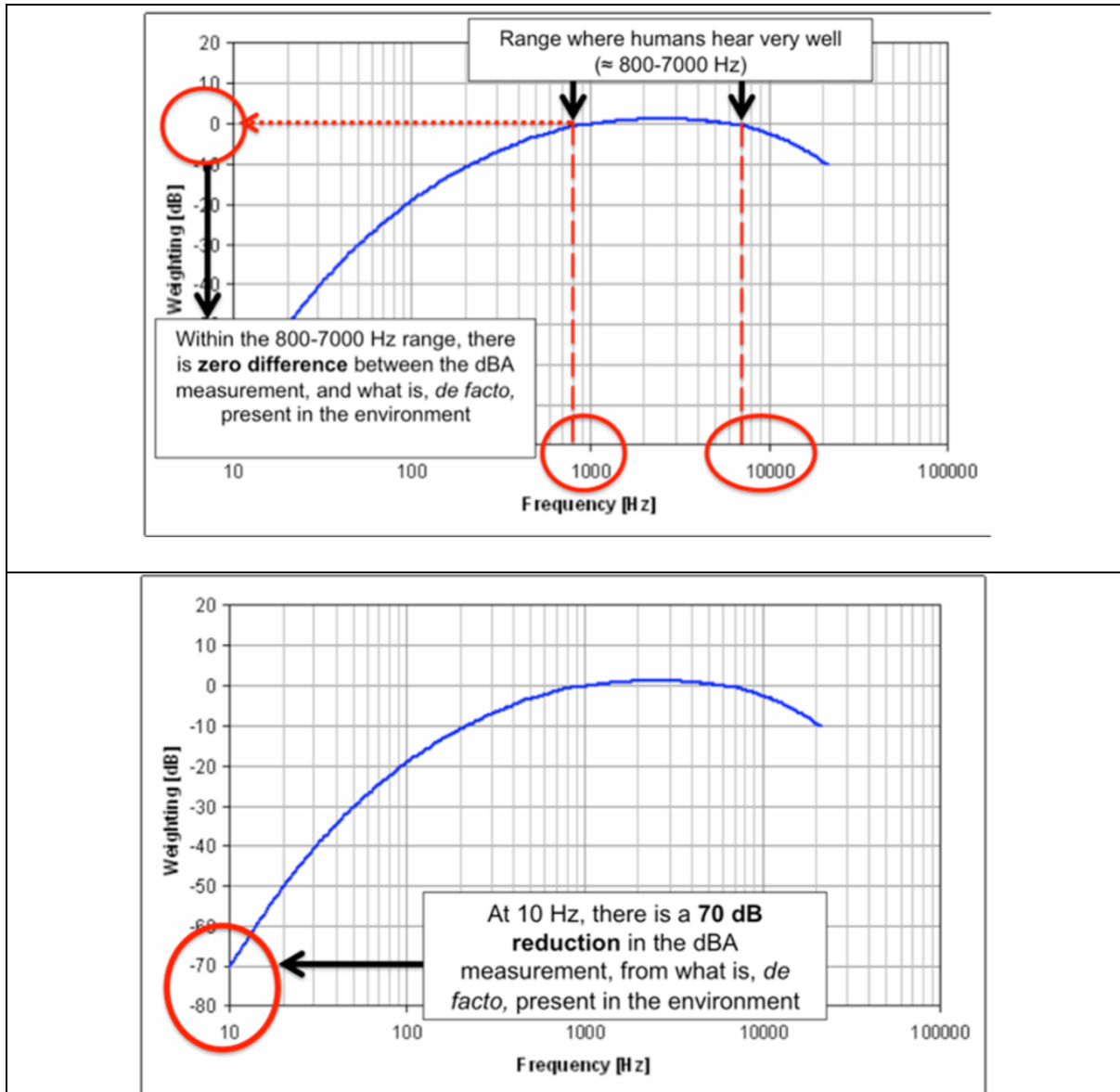


Images Referred to in Precognition by Prof. Alves-Pereira

In: Noise Objection by Ms. Susan Crosthwaite, dated 18 Sept 2020, Fig. 4



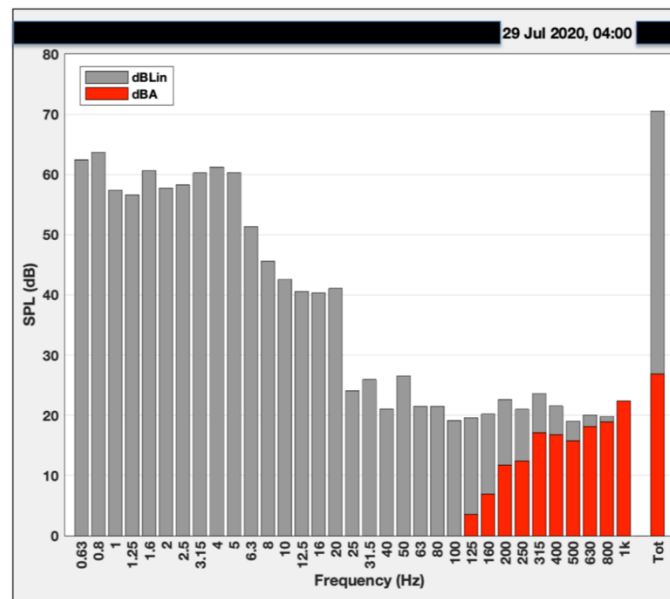


Figure 6. $\frac{1}{3}$ -octave band analysis for 29 July 2020, from 04:00-04:10, in the Master Bedroom on the night when the man felt compelled to take medication at 05:00.

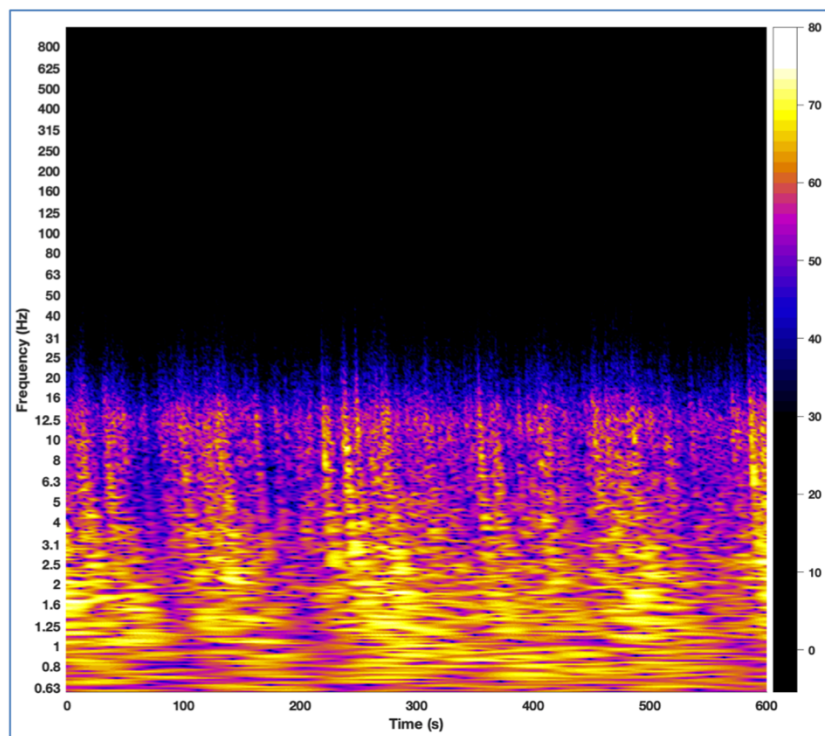


Figure 11. Sonogram of Romo Beach, Denmark on 13th December 2016, 01:10.

In: SC 24, p. 9, Fig. 2

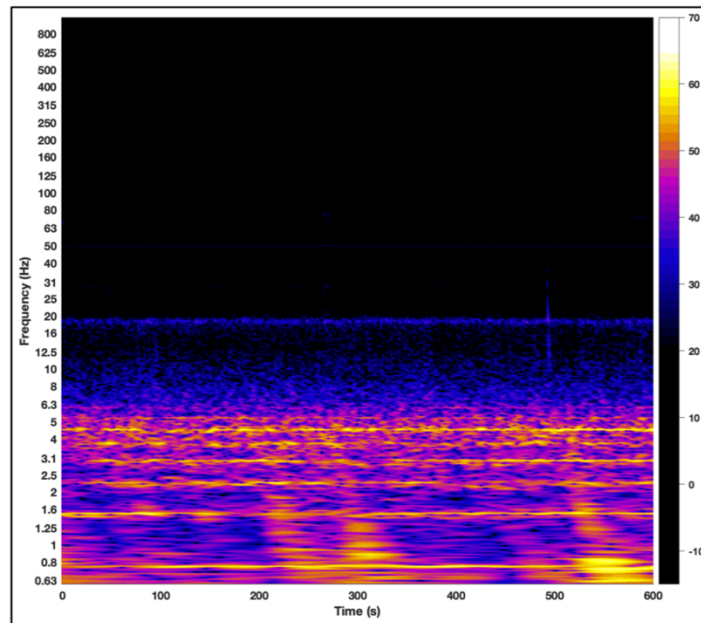


Figure 2. Sonogram of the acoustic environment inside the Master Bedroom of a home located in the vicinity of WTs, from 04:00 to 04:10, on 29 July 2020. At 05:00, the male home-owner was compelled to take medication (see text)¹².

In: SC 35, p. 11, Fig. 4

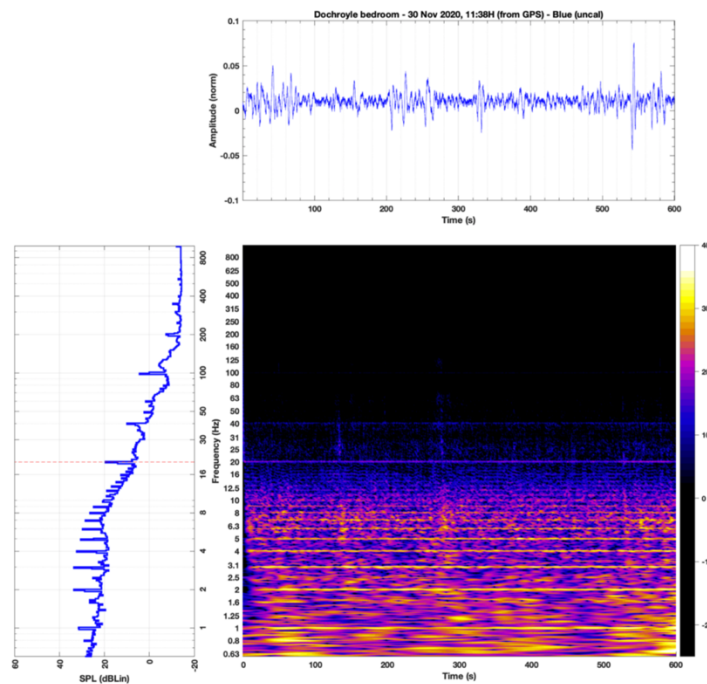


Figure 4: Representative sonogram (bottom right), periodogram (bottom left) and time signal (top) for the Blue channel of the recording.

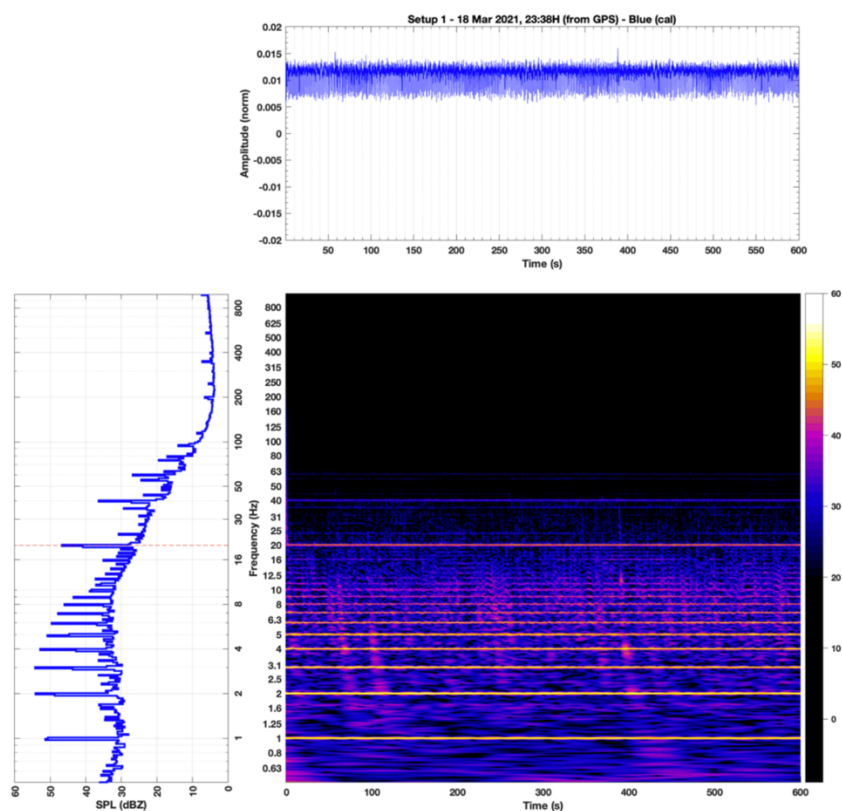


Figure 5: Representative sonogram (bottom right), periodogram (bottom left) and time signal (top) for the Blue channel of the recording.

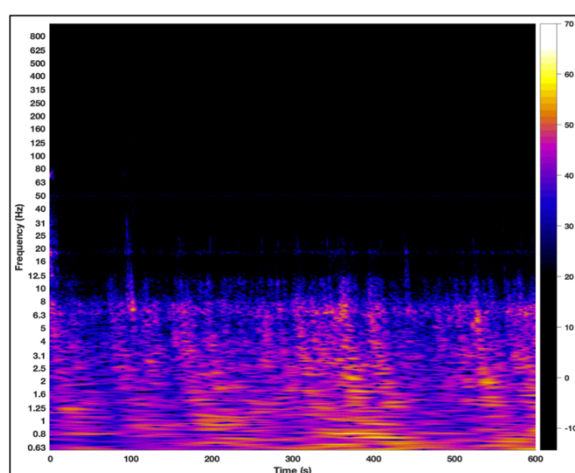


Figure 4. Sonogram of the acoustic environment inside the Master Bedroom of a home located in the vicinity of WTs, from 04:00 to 04:10, on 22 July 2020. No discrete lines are present. This morning the couple slept very well and woke up late.

In: SC 24, p. 10, Fig. 3

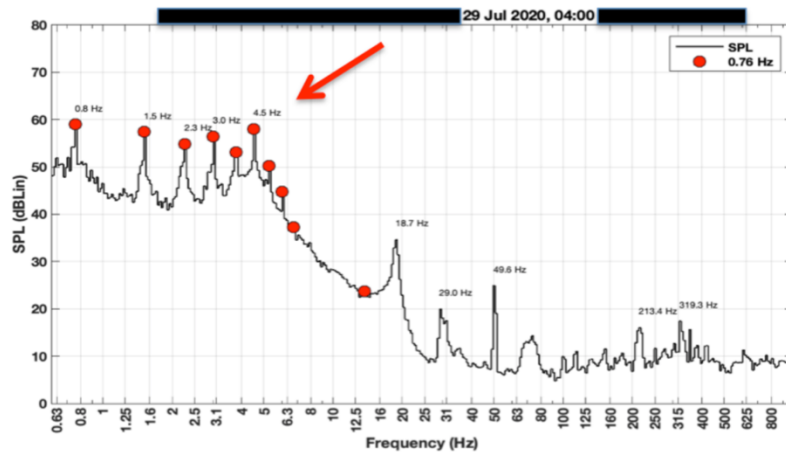


Figure 3. Periodogram of the same data sample as shown in Figure 2, inside the Master Bedroom from 04:00 to 04:10, on July 29th, 2020. The arrow points to the peaks in the levels of acoustic energy, collectively known as the **wind turbine acoustic signature**. The frequencies at which these peaks occur are exactly the same as those at which the “discrete lines” occur in the sonogram above, and depend on WT manufacturer specifications (blade pass frequency).

In: SC 35, p. 13, Fig. 6

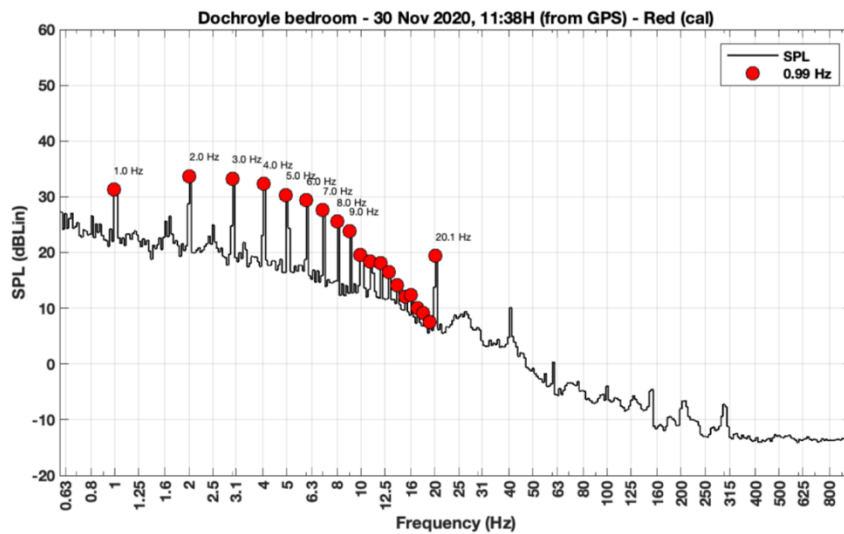


Figure 6: Harmonic analysis of the Red channel (Figure 5).

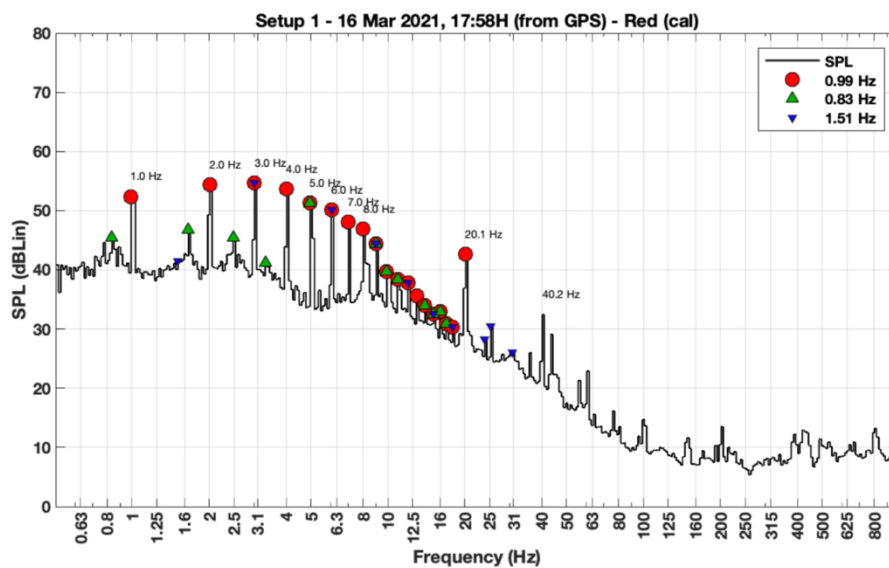


Figure 9: Periodogram of 18:00 on March 16th, 2021 when the heat pumps were turned off.

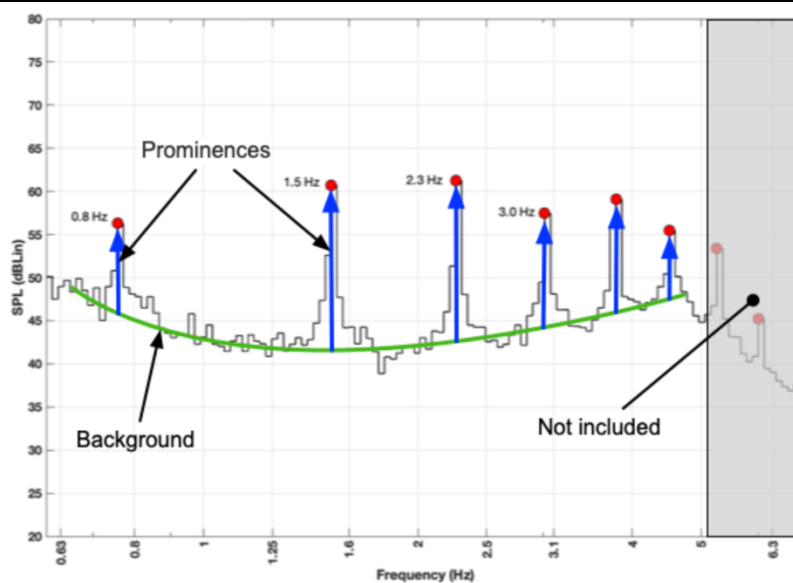


Figure 1: Prominence of a series of harmonic peak (blue) above the background (green).